



IUPUC Board of Advisors

November 11, 2015



Vice Chancellor's Update

Larry Richards

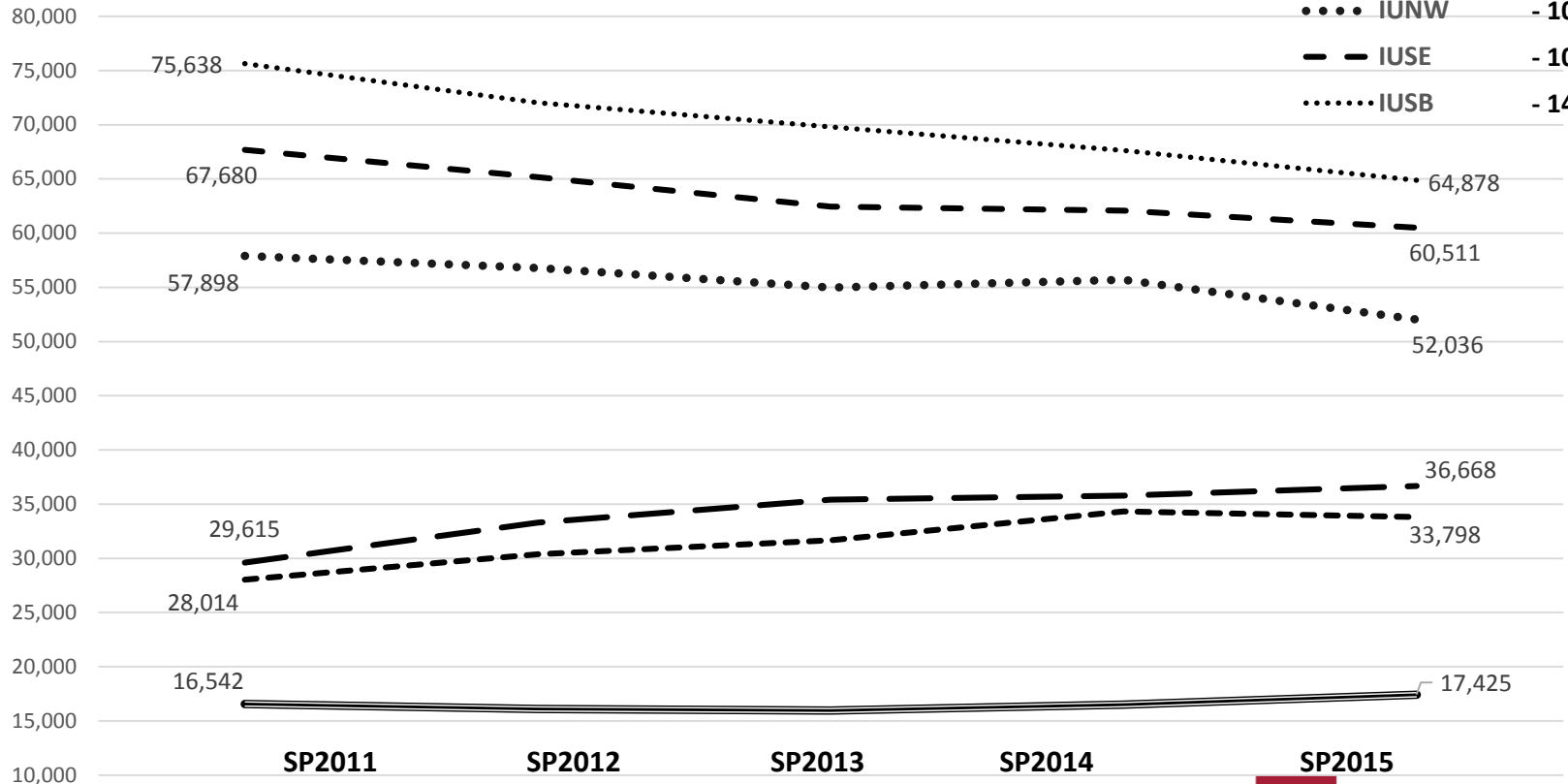
Interim Vice Chancellor and Dean

November 11, 2015



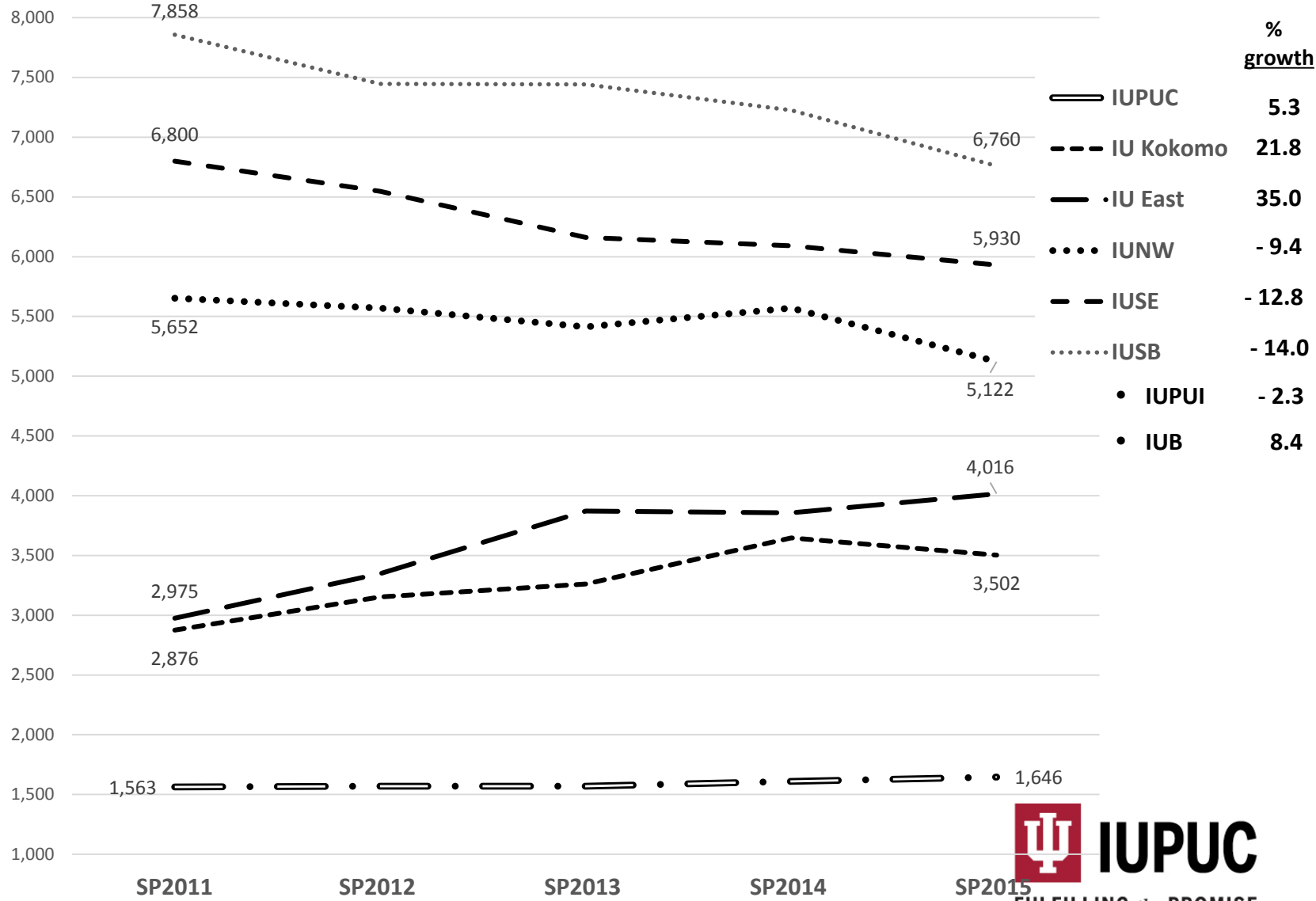
Spring credit hours

	<u>% growth</u>
• IUPUI 317,331 – 326,714	3.0
• IUB 529,730 – 544,301	2.8
— IUPUC	5.3
- - - IU Kokomo	20.6
· IU East	23.8
· · · · IUNW	- 10.1
- - IUSE	- 10.6
· · · · · IUSB	- 14.2





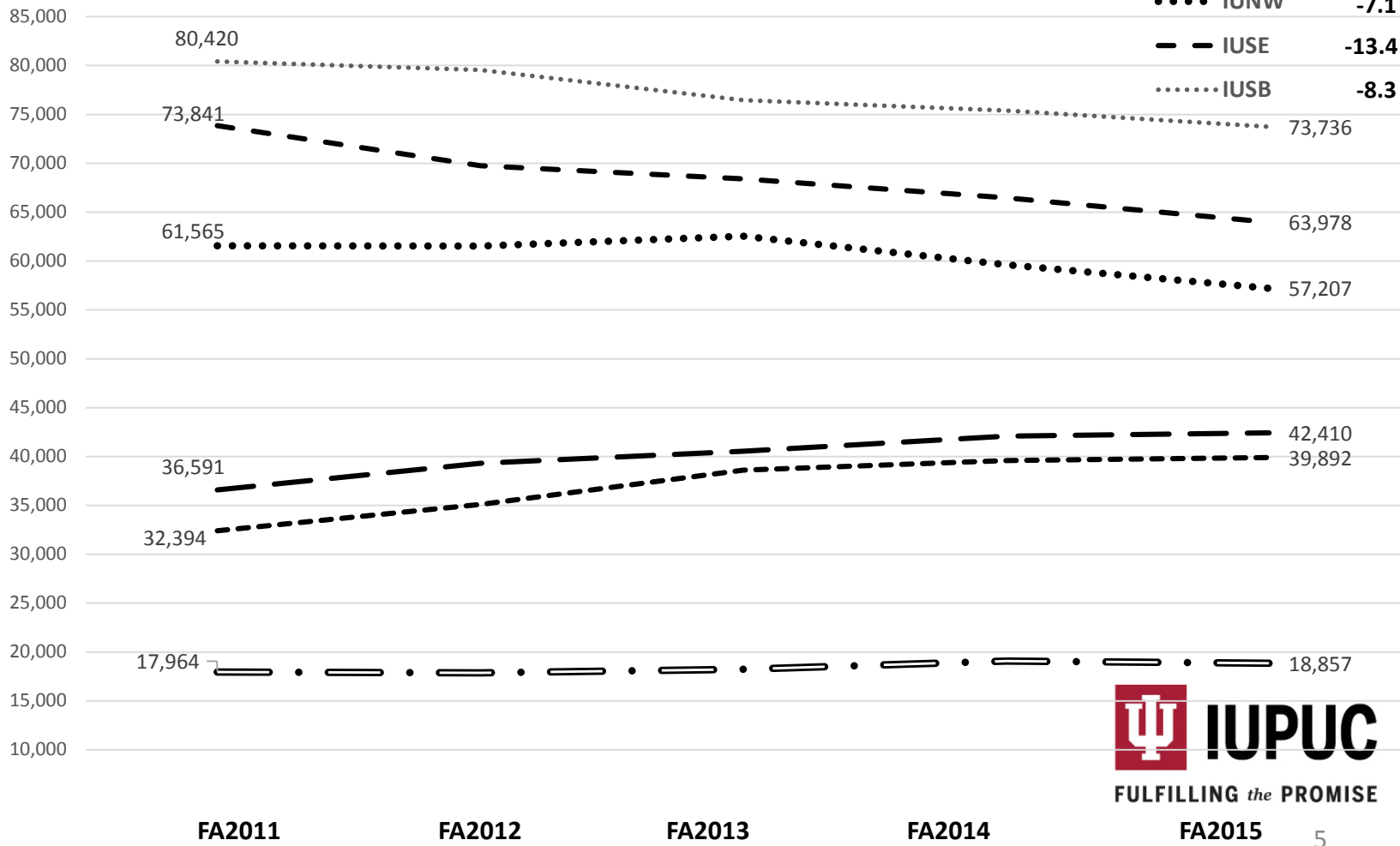
Spring enrollment





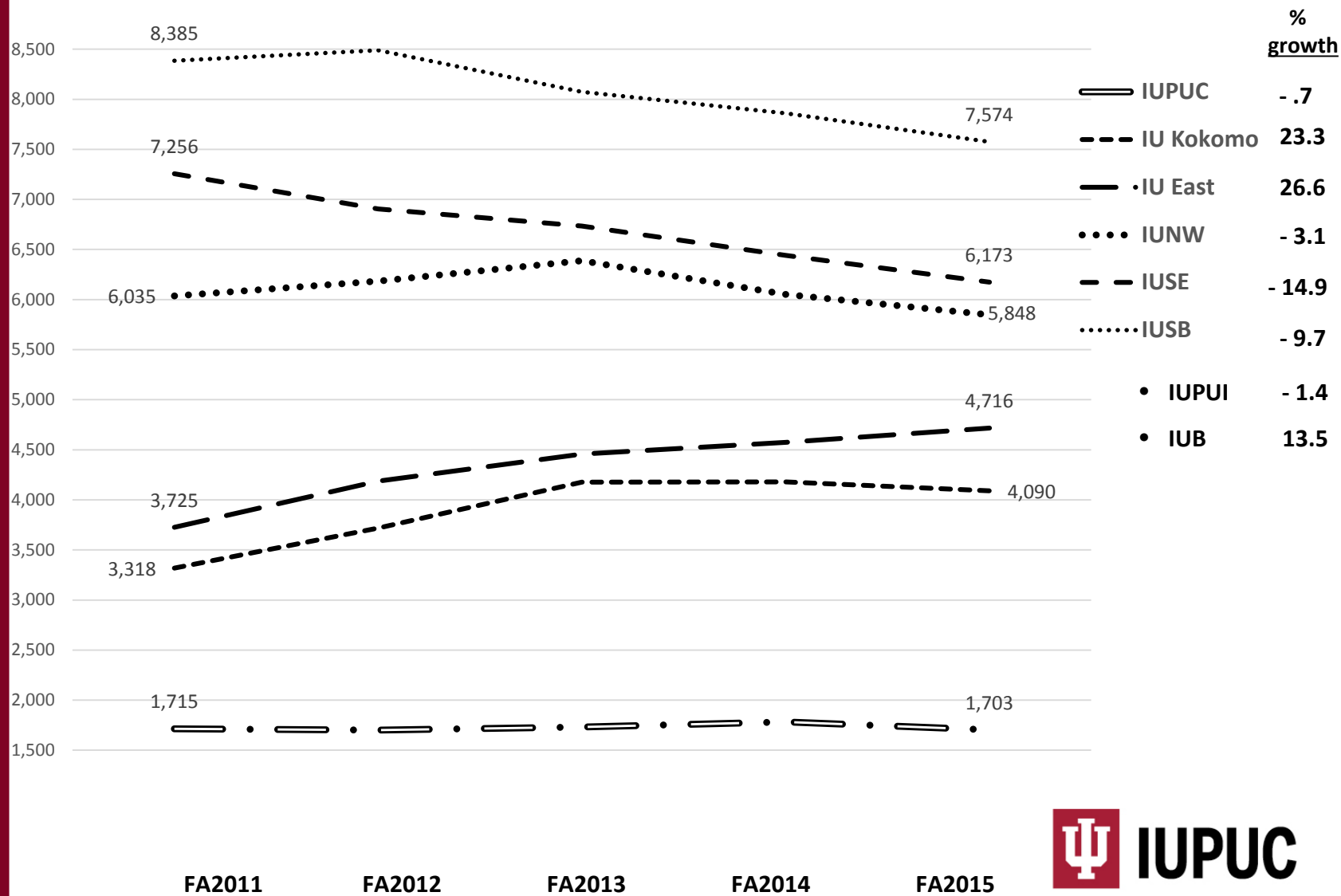
Fall credit hours

	% growth
• IUPUI 327,965 - 342,468	4.4
• IUB 570,178 - 598,457	5.0
— IUPUC	5.0
- - - IU Kokomo	20.1
• IU East	15.9
•••• IUNW	-7.1
- - - IU SE	-13.4
••••• IUSB	-8.3



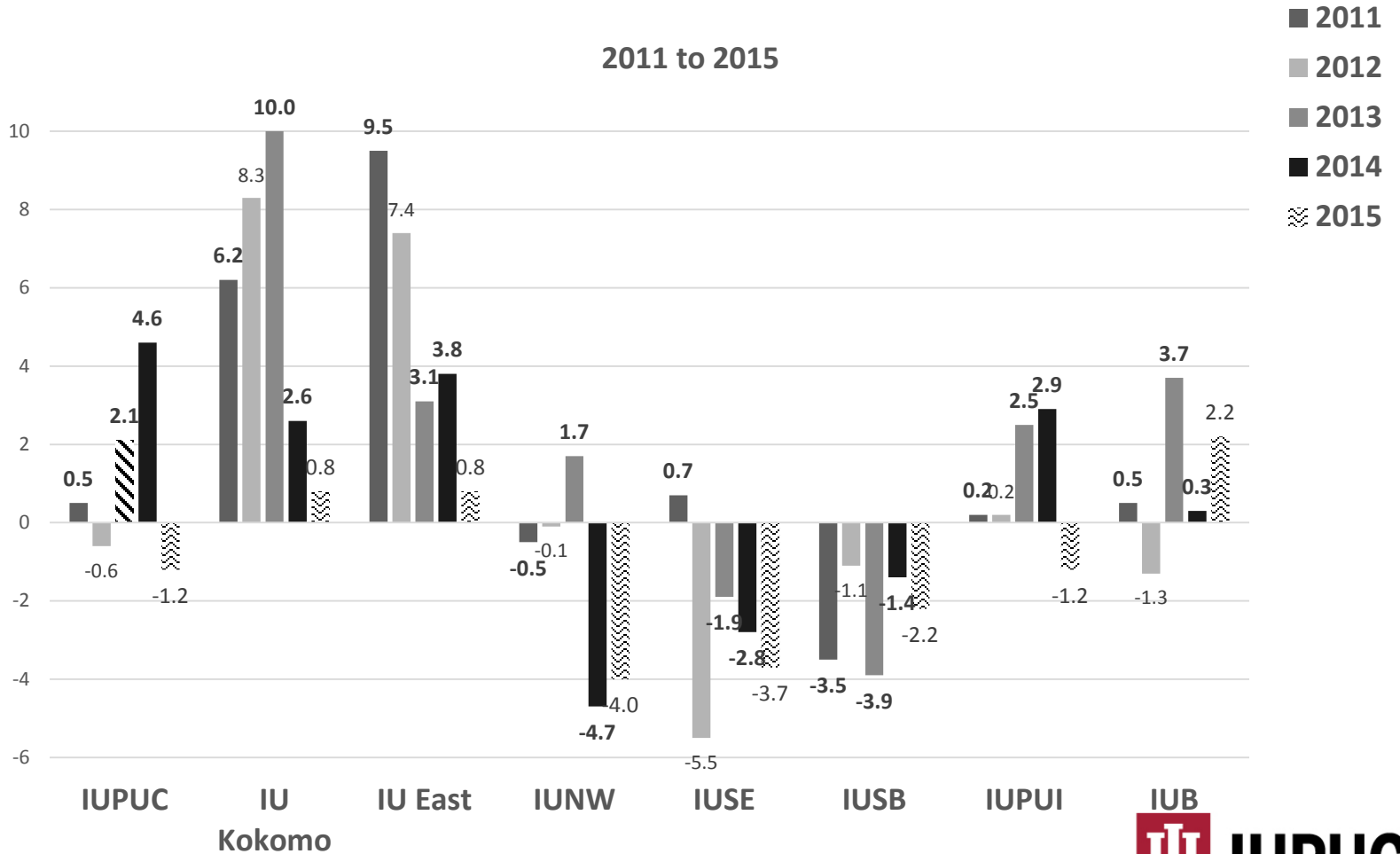


Fall enrollment



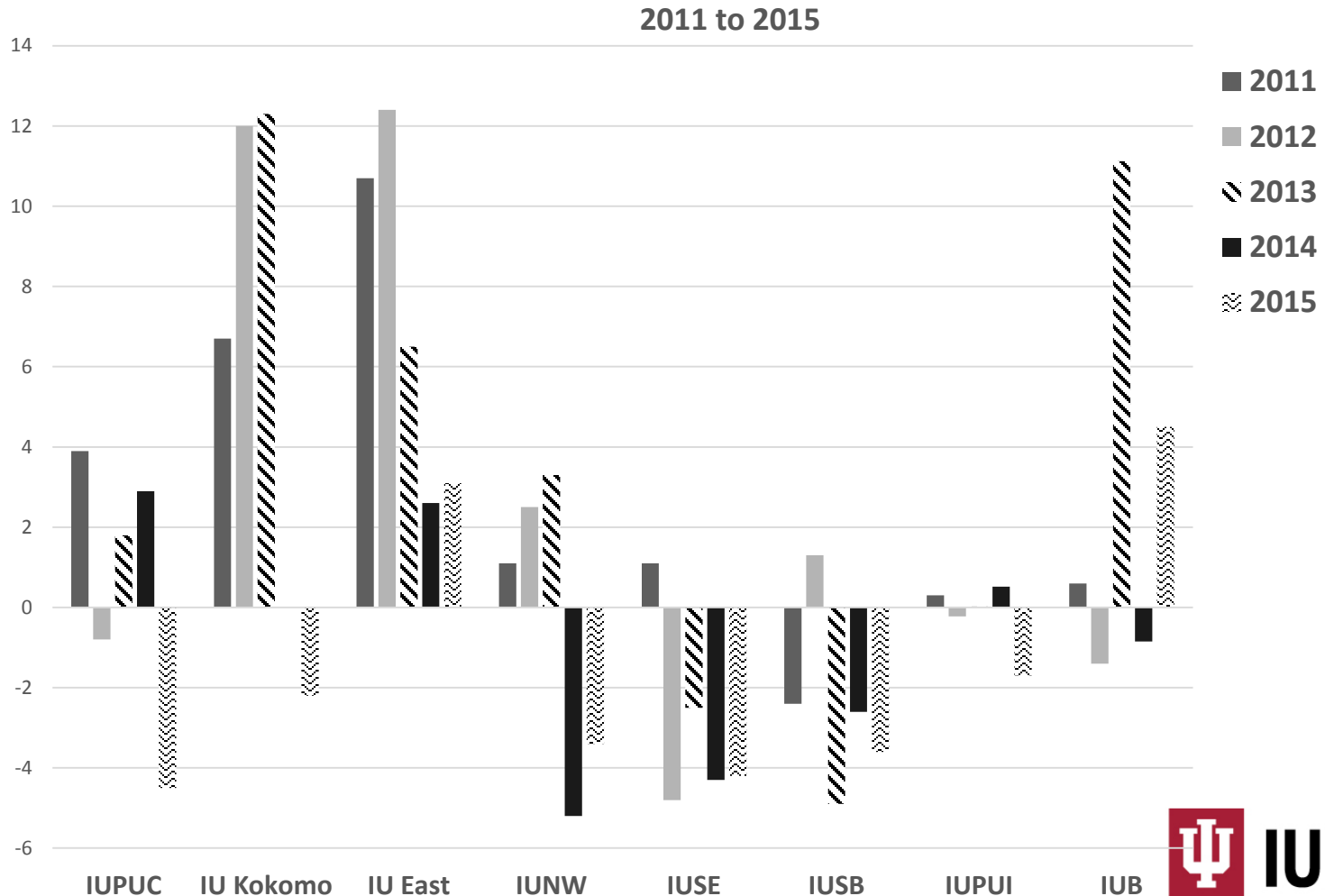


Percentage of growth Fall credit hours



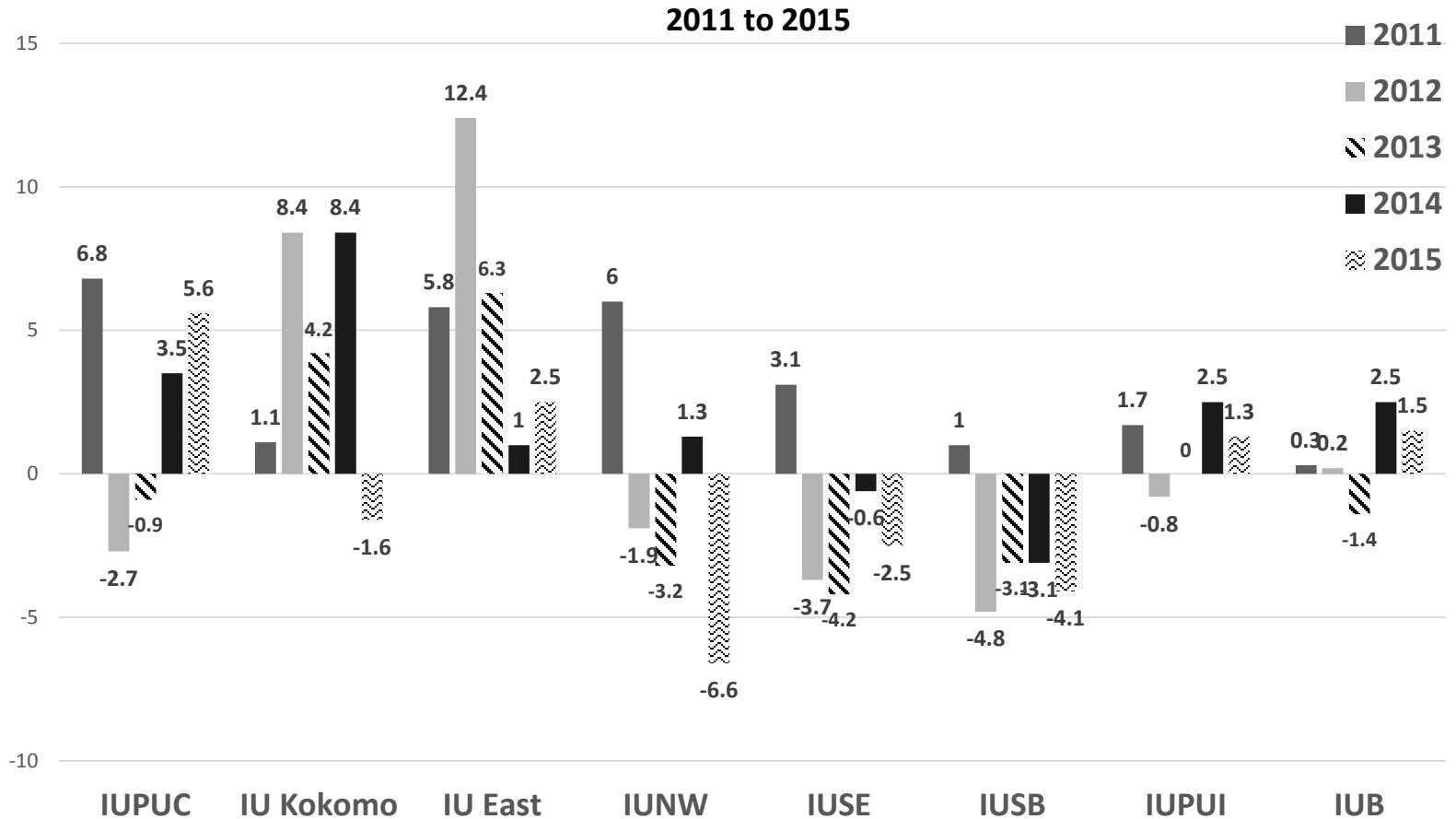


Percentage of growth Fall enrollment



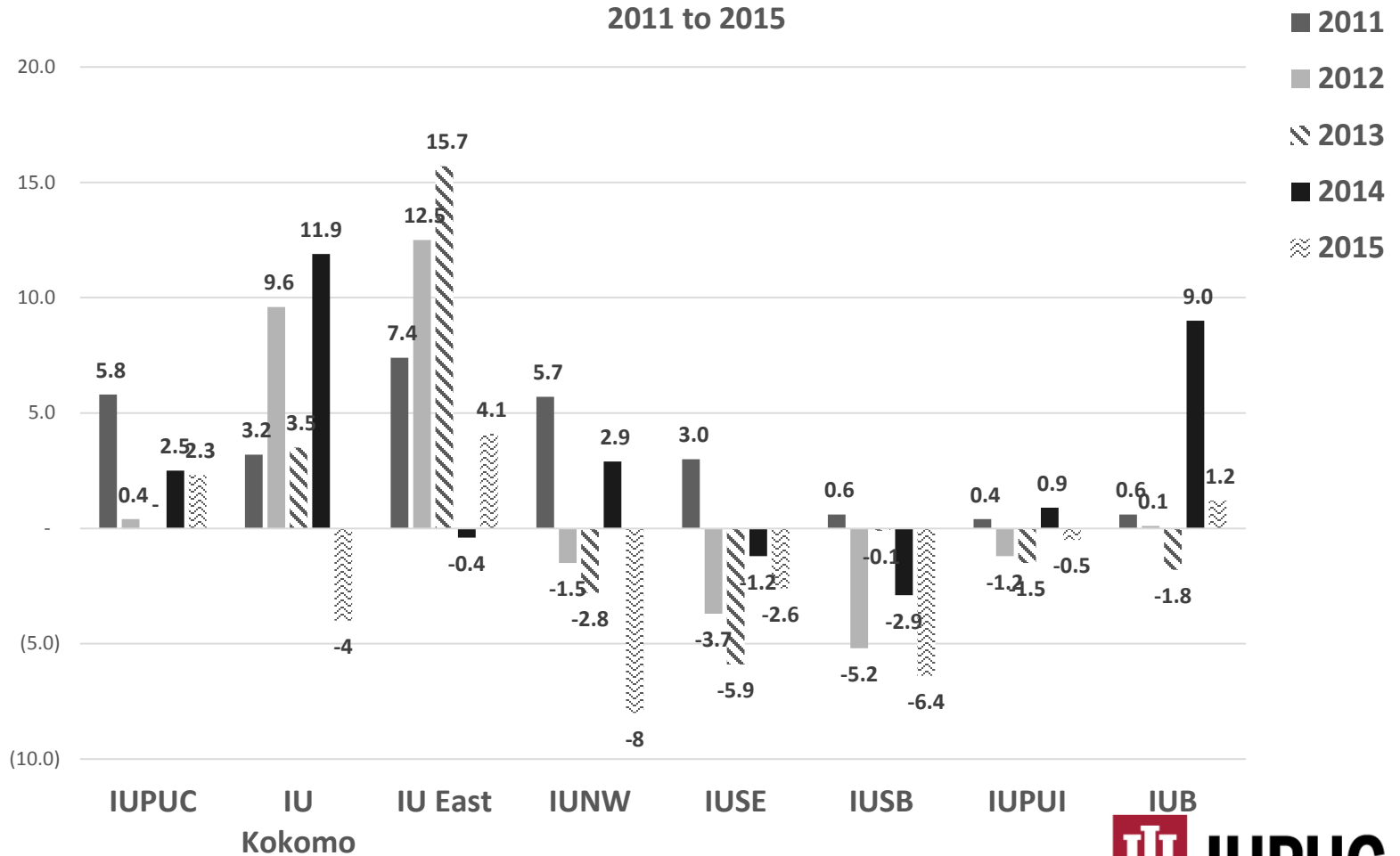


Percentage of growth Spring credit hours





Percentage of growth Spring enrollment





IUPUC BUDGET ISSUES: Where we are, Where we are going

Larry Richards

Interim Vice Chancellor and Dean

November 11, 2015



IUPUC BUDGETS: 2015-16

General Funds	\$14,402,617
Auxiliary Funds	\$641,844
Designated Funds	\$276,555
Restricted Funds	\$115,000



General Fund Budget: Revenue

Income	Budgeted	Estimate (June 2016)	Variance
Student Fees	\$11,929,240	\$11,496,998	(\$432,242)
State Appropriation	5,085,721	5,085,721	0
Other	526,420	523,509	(2,911)
IUPUI Assessment	(3,192,580)	(3,192,580)	0
Transfers	53,816	(348,286)	(402,102)
TOTAL INCOME	\$14,402,617	\$13,565,362	(\$837,255)



General Fund Budget: Expenses

Expense	Budgeted	Estimate (June 2016)	Variance
Total Compensation	\$11,680,140	\$11,520,094	(\$160,046)
Financial Aid	555,000	379,861	(175,139)
General Expense	1,220,038	1,108,851	(111,187)
Travel	92,161	91,453	(708)
Capital Assets	50,000	50,000	0
Transfers	613,784	504,967	(108,817)
Unallocated (Contingency)	191,494	0	(191,494)
TOTAL EXPENSE	\$14,402,617	\$13,655,226	(\$747,391)



General Fund Budget: Shortfall

	Budgeted	Estimate (June 2016)	Variance
Total Income	\$14,402,617	\$13,565,362	(\$837,255)
Total Expense	\$14,402,617	\$13,655,226	(\$747,391)
ESTIMATED SHORTFALL			(\$89,864)



General Fund Budget: Strategies for Current Year

- Retain salary savings
- Use part-time employees temporarily
- Delay filling positions
- Monitor potential cost savings, such as travel, office supplies, hospitality
- Move funds from other accounts when possible
- Look for donor funding possibilities



Budget Reconciliation

General Fund Balance (Campus Reserves)

July 1, 2015: \$1,215,484

Less shortfall (est.): \$89,864

July 1, 2016 (est.): \$1,125,620



Trend in General Fund Reserves

	2011-12	2012-13	2013-14	2014-15
Beginning Fund Balance	\$2,106,496	\$2,348,572	\$2,333,274	\$1,714,217
Change from Operations	242,076	(15,298)	(619,058)	(498,732)
Ending Fund Balance	\$2,348,572	\$2,333,274	\$1,714,216	\$1,215,485
2015-16 estimated shortfall				(89,864)
2015-16 estimated ending fund balance				\$1,125,621



General Fund Budget: Strategies for 2016-17

Revenue-side:

- Use realistic enrollment projections
- Schedule more summer courses
- Better estimate Purdue income
- Budget for engineering transfer and online revenue sharing



General Fund Budget: Strategies for 2016-17

Expense-side:

- Use more part-time staff and student workers where possible
- Tighten travel, hospitality and supplies expenses
- Budget higher unallocated fund (contingency)



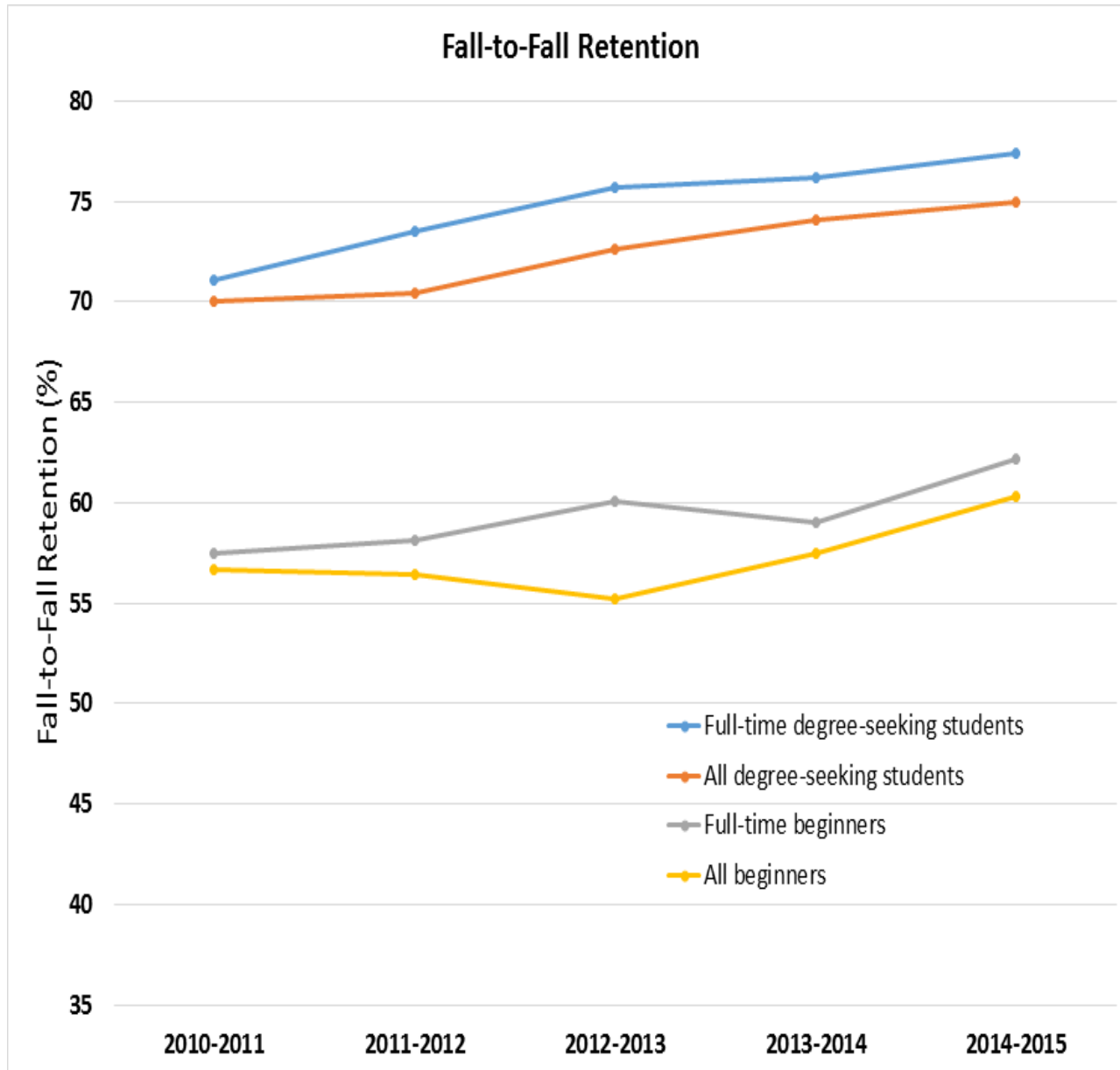
General Fund Budget: Long-term Strategies

Growth

- Attract more students from high schools who could have gone elsewhere (accelerated programs, student center)
- Recruit Ivy Tech graduates more aggressively
- Encourage employers to support continuing education of their employees
- Add selected degree and certificate programs
- Deliver programs to accommodate working adults (online courses, hybrid programs)
- Retain more students



Fall-to-fall retention



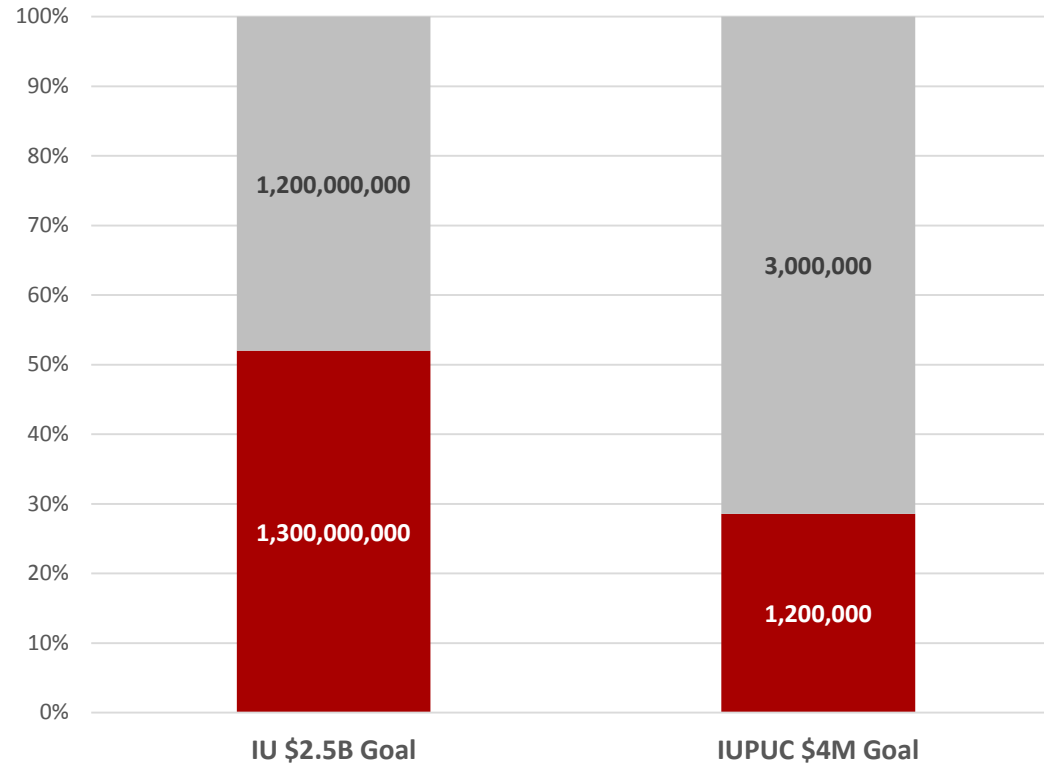


Ms. Brenda Vogel

**Development and
External Affairs**

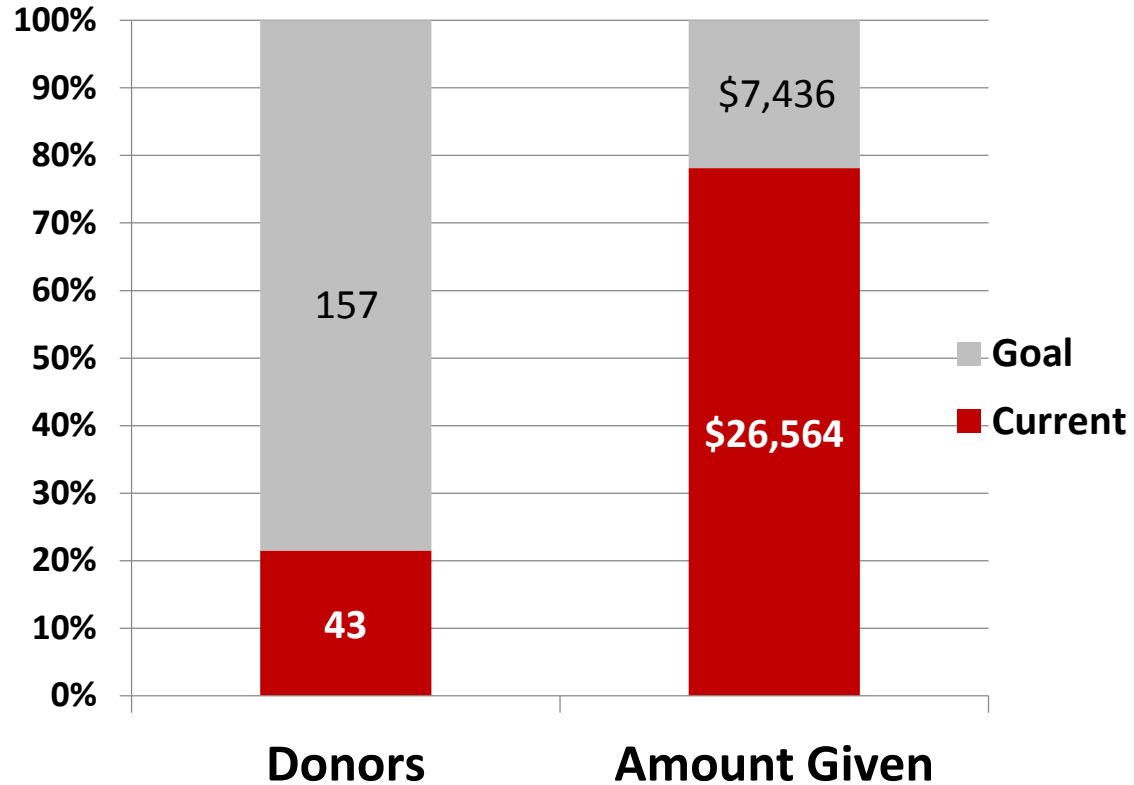


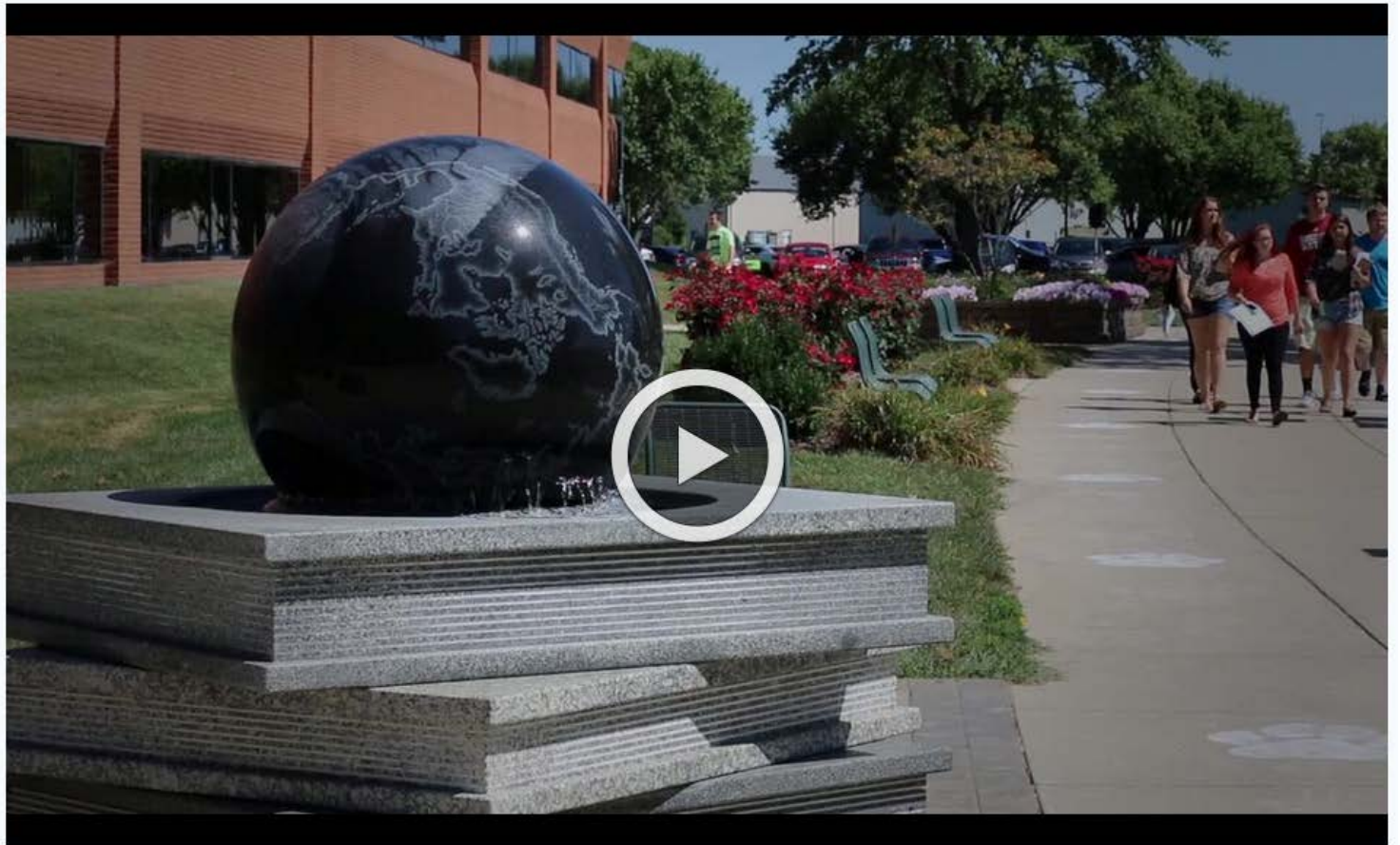
IU Bicentennial Campaign Goal To Date September 30, 2015





IUPUC Campus Pride Campaign Goal to Date October 30, 2015







IUPUC Board Engagement Opportunity & Examples





Questions?